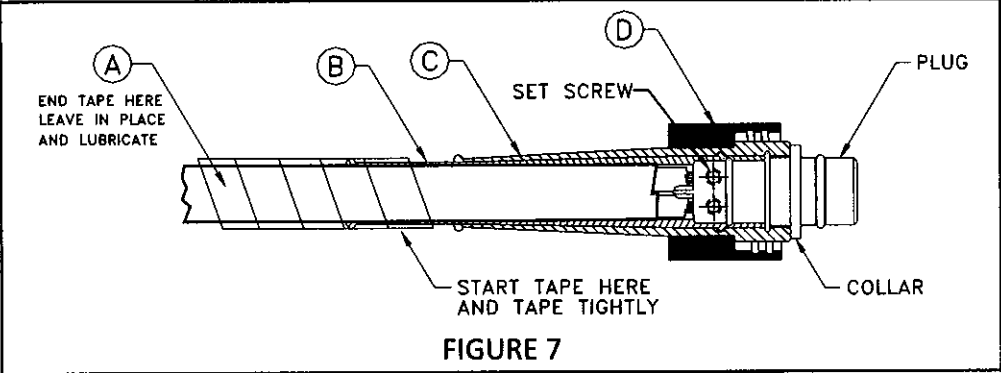
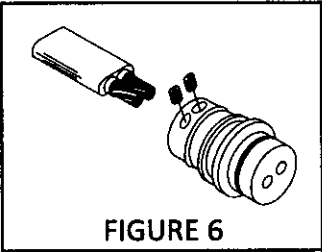


PUMP CONNECTION & INSTALLATION INSTRUCTIONS (Continued)

- 2.8 Insert the wire leads into Plug (Cable Adapter) connectors and use a 5/64" Allen Wrench to tighten the set screws (Fig. 6). Either wire can go into either plug hole. Pump performance will be the same.
- 2.9 Slide the Inner Cable Boot (B) over the plug until it is flush with the first step on the collar (Fig. 7).
- 2.10 Wipe the grease from the surface of the Inner Cable Boot (B) and Cable (A).
- 2.11 Tape end of Inner Cable Boot (B) tightly to the Cable (A). Tape 4 in. (10 cm) past the Inner Cable Boot (B) onto the Cable (A).

**Note:** This taped area allows the Outer Cable Boot (C) to slide freely over the Inner Cable Boot. DO NOT REMOVE THE TAPE.

- 2.12 Lubricate the outer surface of the Inner Cable Boot (B) and tape with supplied O-Ring grease.
- 2.13 Slide the Outer Cable Boot (C) over the Inner Cable Boot (B) until it is flush with the second step on the collar (Fig. 7).
- 2.14 Push the Plug (Cable Adapter) into the Receptacle (Cable Adapter) until the collar is seated flush.
- 2.15 Push the Nut (D) over the Plug (Cable Adapter) and then finger tighten the nut.



**NOTE:** Before continuing, operate the pump to check all electrical connections. Refer to Technical Specifications (Pg. 14) If the pump does not operate, refer to **TROUBLESHOOTING** (Page 8).

3. Install the 6 inch hose and fitting (1/2" NPT-M x 1/2" BARB) (Fig. 8)

- 3.1 Press the fitting into the 6 in. hose, slide a clamp on the hose and over the fitting and tighten the clamp securely.
- 3.2 Slide another clamp on the 6 in. hose and slide the assembly over the barbed fitting on the pump and tighten the clamp securely.

**Note:** Select the proper adapter hose and accessories for the pump.  
USE OF DISCHARGE PIPE LARGER THAN 3/4" IS NOT RECOMMENDED..  
Use 150 P.S.I. Min. [10 bar] working pressure rated 1/2 in. [13 mm] Inner Diameter smooth bore hose. Use included All-Stainless Steel hose clamps.

4. Hook-up Safety Line (Sling) (Fig. 8)

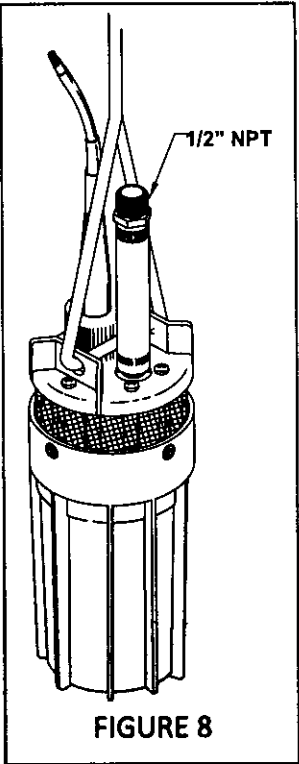
**CAUTION:** Safety line (Sling) should be Corrosion-resistant.

- 4.1 Insert safety line (Part not included) through lift plate holes.
- 4.2 Fasten line with appropriate connection approximately 1-2 ft [25-50 cm] above the pump.

5. Band the Hose, Safety Line, and Electrical Cable (Fig. 9)

- 5.1 Tie the drop lines together using tie wrap every 6ft. (1.8 m). This banding will prevent damage to the lines during Installation and Removal of pump.

6. Install Pump (Fig. 9).



MODEL 9325 SUBMERSIBLE PUMP PARTS LIST – Refer to FIGURE 17

ITEM	DESCRIPTION	QUANTITY
A	CABLE [NOT INCLUDED]	1
B	INNER CABLE BOOT	1
C	OUTER CABLE BOOT	1
-	PLUG (CABLE ADAPTER) [NOT SHOWN]	1
-	SCREW (PLUG) [NOT SHOWN]	2
D	NUT	1
E	SCREW (LIFT PLATE)	6
F	LIFT PLATE	1
G	OUTLET FITTING	1
H	O-RING (OUTLET FITTING)	1
I	O-RING (LIFT PLATE)	3
J	RECEPTACLE (CABLE ADAPTER)	1
K	SET SCREW (RECEPTACLE)	2
L	SCREW (MOTOR)	3
M	FILTER SCREEN	1
N	UPPER HOUSING	1
O	O-RING (UPPER HOUSING)	2
P	SPRING (BYPASS)	3
Q	POPPET (BYPASS)	3
R	VALVE HOUSING ASSEMBLY	1
S	LOWER HOUSING ASSEMBLY	1
T	MOTOR	1
U	CANISTER	1
V	SCREW (CANISTER)	3
W	LOCK WASHER (MOTOR SCREW)	3

REPLACEMENT PART KITS

Model	Description	Contents
94-135-00	LIFT PLATE	[E,F,I]
94-136-00	CABLE PLUG	[B,C,D,J,K,PLUG(CABLE ADAPTER) W/ SET SCREWS]
94-137-00	VALVE ASSEMBLY	[O,P,Q,R]
94-138-00	LOWER HOUSING ASSEMBLY	[O,S]
94-139-00	MOTOR	[O,T]
94-140-00	CANISTER	[O,U,V]
94-141-00	FILTER SCREEN	[M]
94-142-00	O-RING	[H,I,O,O-RING(VALVE HOUSING ASSEMBLY)]

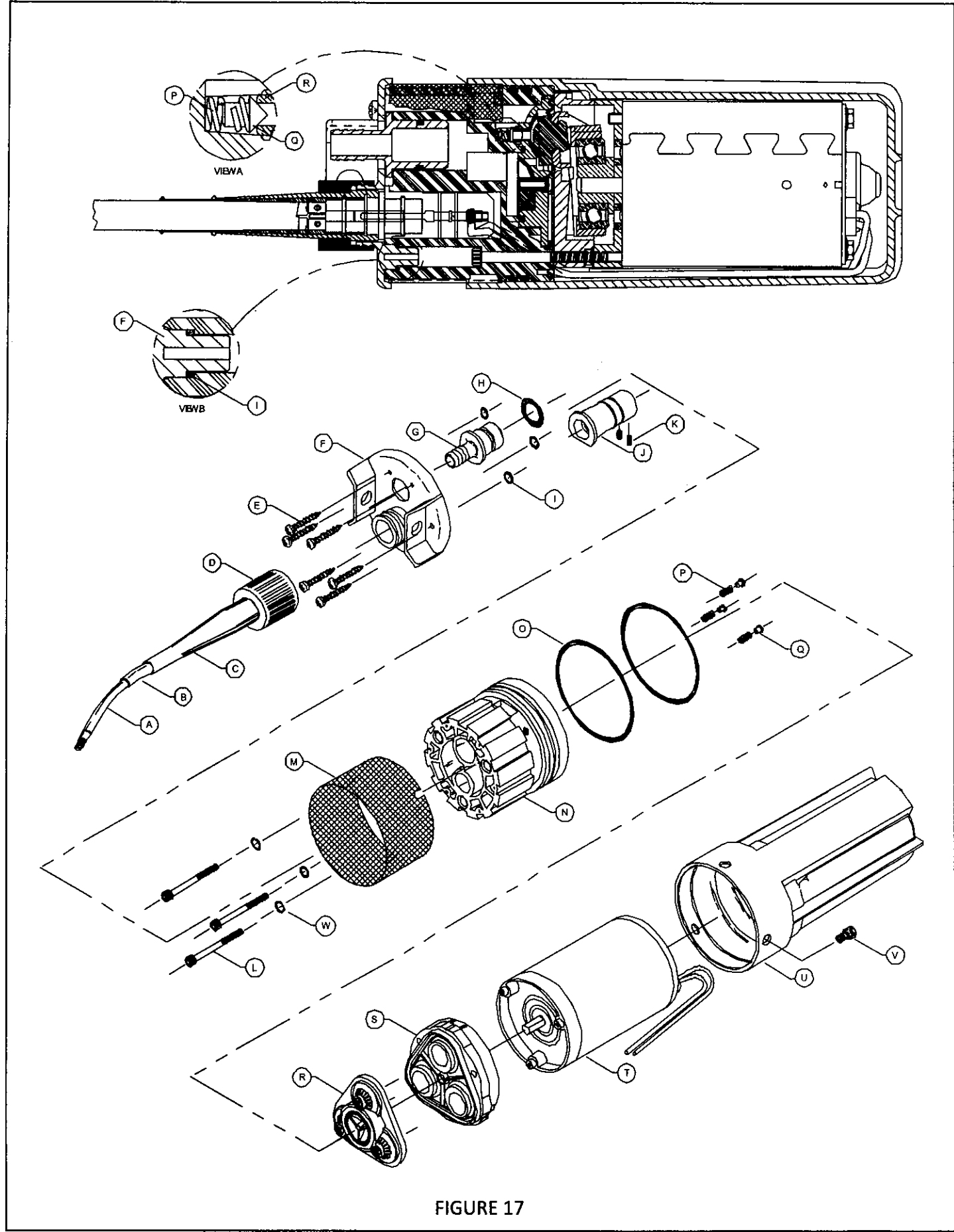


FIGURE 17

# I. PUMP CONNECTION & INSTALLATION INSTRUCTIONS

**WARNING: IMPROPER INSTALLATION WILL VOID WARRANTY.**

## 1. Select and Purchase the Proper Jacketed Cable (Fig. 1)

**Note:** **DO NOT** select cables with irregular shapes, rough or grooved surfaces. A smooth jacket is needed for proper sealing.  
Use a #10 AWG jacketed Submersible Cable that fits into the general size requirements shown (Fig 1).

RECOMMENDED CABLE TYPE	MINIMUM DIMENSION OF CABLE	MAXIMUM DIMENSION OF CABLE
FLAT PARALLEL	.22 IN (5.5 mm)	.42 IN (10.5 mm)
ROUND	.35 IN (9.0 mm)	.45 IN (11.5 mm)

FIGURE 1

## 2. Assemble Cable Boot (Fig. 2 thru 7)

- 2.1 Strip the outer cable jacket (A) 2.0 in. [5 cm] (Fig. 2).
- 2.2 Cut one of the lead wires 1.0 in. [2.5 cm] (Fig. 3).
- 2.3 Wrap electrical tape around the cable (A). Start 2 in. [5 cm] below outer cable jacket and continue to taper at a point past the end of the lead wires (Fig 4).
- 2.4 **Generously** lubricate the cable 4 to 6 in. [10 to 15 cm] with supplied O-Ring grease.
- 2.5 Slide the cable boot components over the cable (A) in the following order (Fig. 4).
  1. Nut (D). Make sure threads are toward pump end of cable.
  2. Outer Cable Boot (C). Small end first.
  3. Inner Cable Boot (B). Small end first.
- 2.6 Remove tape and cut the lead wires back leaving about .50 in. [1.3 cm] exposed (Fig. 5).
- 2.7 Strip the inner conductor jacket .50 in. [1.3 cm] (Fig. 5).

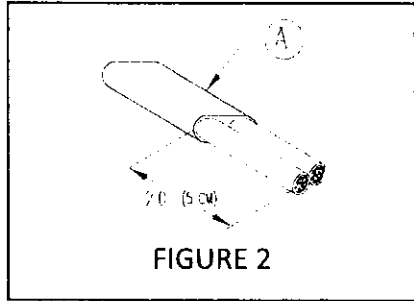


FIGURE 2

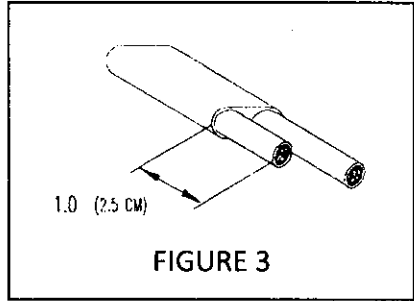


FIGURE 3

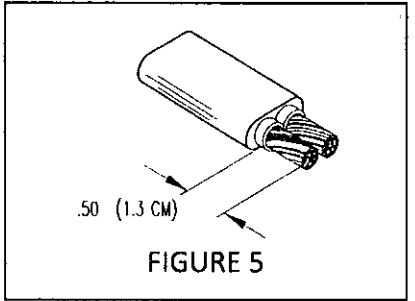


FIGURE 5

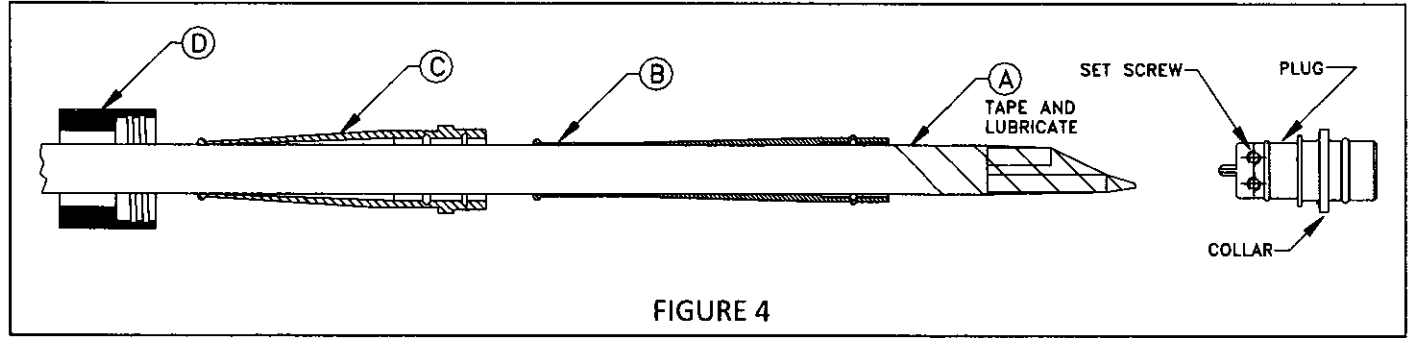


FIGURE 4

**PUMP FLOW TABLES - TOTAL VERTICAL LIFT= H1+H2+H3**

**12 VDC FLOW TABLE**

TOTAL VERTICAL LIFT		FLOW RATE PER HOUR		SOLAR ARRAY SIZE MINIMUM TOTAL POWER RATING	CURRENT AMPS
FEET	METERS	GAL	LTR	WATTS	
20	6.1	56	212	22	1.2
40	12.2	54	204	28	1.5
60	18.3	52	197	33	1.8
80	24.4	50	189	37	2.0
100	30.5	49	186	40	2.1
120	36.6	47	178	45	2.4
140	42.7	46	174	51	2.7
160	48.8	44	166	56	3.0
180	54.9	43	163	61	3.3
200	61.0	41	155	64	3.4
230	70.1	36	136	72	3.9

**24 VDC FLOW TABLE**

TOTAL VERTICAL LIFT		FLOW RATE PER HOUR		SOLAR ARRAY SIZE MINIMUM TOTAL POWER RATING	CURRENT AMPS
FEET	METERS	GAL	LTR	WATTS	
20	6.1	117	443	58	1.5
40	12.2	114	432	65	1.7
60	18.3	109	413	78	2.1
80	24.4	106	401	89	2.4
100	30.5	103	390	99	2.6
120	36.6	101	382	104	2.8
140	42.7	99	375	115	3.1
160	48.8	98	371	123	3.3
180	54.9	93	352	135	3.6
200	61.0	91	345	141	3.8
230	70.1	82	310	155	4.1

APPLICATION WORKSHEET

Please fill in for your records.

MODEL NUMBER \_\_\_\_\_  
SERIAL NUMBER \_\_\_\_\_  
MFG. DATE \_\_\_\_\_  
PURCHASE DATE \_\_\_\_\_  
TOTAL WELL DEPTH \_\_\_\_\_ FT(M)  
WELL RECOVERY RATE \_\_\_\_\_

**PUMP DISTRIBUTOR:**  
Name \_\_\_\_\_  
Address \_\_\_\_\_  
City \_\_\_\_\_  
Phone \_\_\_\_\_

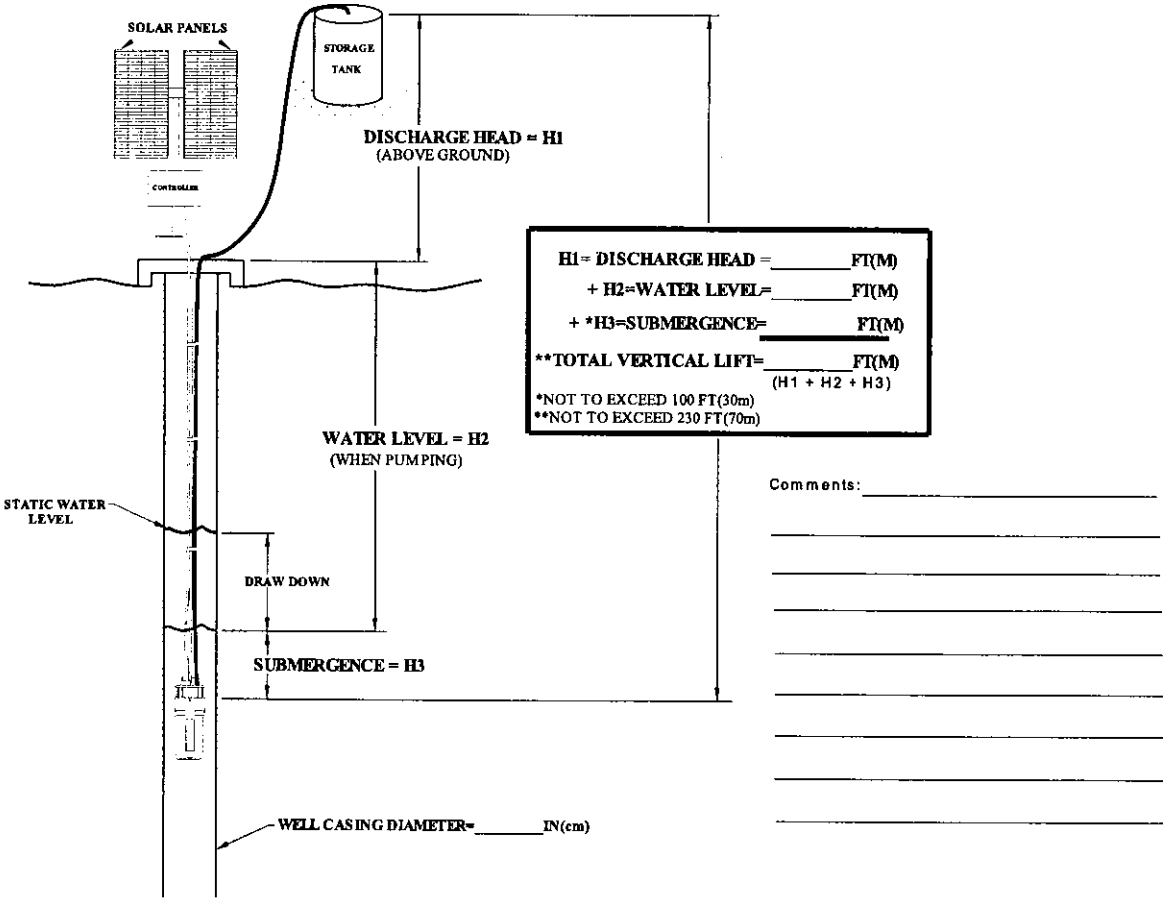
SOLAR ARRAY INFORMATION:

MAKE/MODEL \_\_\_\_\_  
WATTS AVAILABLE (NO. OF PANELS X WATTS PER PANEL = ) \_\_\_\_\_

CONTROLLER INFORMATION:

MAKE/MODEL \_\_\_\_\_

**NOTE:** Use of an LCB (Linear Current Booster) Unit is required for optimum performance. LCB is not included.



TERMS:

H1=DISCHARGE HEAD = Vertical distance in feet from ground level to level of water in elevated storage tank.  
H2=WATER LEVEL = Vertical distance in feet from level of water in well when pumping up to ground level.  
H3=SUBMERGENCE = Vertical distance in feet from level of water in well when pumping, to pump position in well.

**Note:** **DO NOT** submerge the pump deeper than necessary unless the water level is known to be highly variable (Pump may operate dry for short periods of time.).

**Drawdown** = Vertical distance in feet from static water level to water level when pumping.

**Note:** Make sure the pump is installed below the lowest anticipated water level.  
Consider the seasonal changes in the region.

## **TABLE OF CONTENTS**

	<b>PAGE</b>
<b>INTRODUCTION</b>	<b>2</b>
<b>TOOLS REQUIRED FOR INSTALLATION &amp; MAINTENANCE</b>	<b>2</b>
<b>COMPONENTS NEEDED FOR INSTALLATION</b>	<b>2</b>
<b>APPLICATION WORKSHEET and FLOW TABLES</b>	<b>3</b>
<b>PUMP CONNECTIONS &amp; INSTALLATION INSTRUCTIONS</b>	<b>5</b>
<b>TROUBLESHOOTING</b>	<b>8</b>
<b>PUMP REMOVAL and DISASSEMBLY</b>	<b>9</b>
<b>PUMP RE-ASSEMBLY</b>	<b>11</b>
<b>TECHNICAL SPECIFICATIONS</b>	<b>14</b>
<b>PARTS LIST and REPLACEMENT PART KITS</b>	<b>15</b>
<b>SUBMERSIBLE PUMP ASSEMBLY DRAWING</b>	<b>16</b>
<b>WARRANTY</b>	<b>17</b>

### **INTRODUCTION**

This manual has been provided as an aid to the operator with information about installing, operating, and servicing of the SHURflo 9325 Series Submersible Pump. The engineers and technicians who designed and manufactured these pumps have developed these instructions from their experiences.

These instructions should be read completely before installing your new pump. Keep this manual readily available at all times for use when installing, operating, or servicing your pump.

**For proper placement in the well refer to the application worksheet on pages 3-4.**

**This pump is not to be used with flammable liquids.**

### **TOOLS REQUIRED FOR INSTALLATION & MAINTENANCE**

#1 and #2 Phillips Screwdriver	Wire Cutters
5/64" Allen Wrench	Wire Strippers
5/32" Allen Wrench	Pliers
3/16" Allen Wrench	Dry Cloth or Cotton Tipped Applicator for cleaning O-Ring grooves
Electrical Tape	Tie wraps

### **COMPONENTS NEEDED FOR INSTALLATION**

**APPLICATION WORKSHEET**

**POWER CABLE (Not Included)**

**COUPLER AND DISCHARGE FOR OUTLET (Included)**

**DISCHARGE HOSE OR PIPE (Not Included)**

**SAFETY LINE (Not Included)**

**POWER SUPPLY (Not Included)**

**FUSE (Not Included)**

**CONTROLLER (Not Included)** Use a Linear Current Booster for optimum performance

## WARRANTY

### LIMITED WARRANTY PROCEDURE

SHURflo warrants its pump to be free of defects in material and workmanship to the original retail purchaser for a period of one year beginning with the purchase date of the unit or, in the absence of proof of purchase date, one year from the date of manufacture as shown on the pump, not to exceed two (2) years in any event. Each pump has been operated and tested before being shipped from SHURflo's factory. During the warranty period if the pump is not operating correctly, you may return it freight pre-paid to your local distributor, dealer or directly to SHURflo.

Upon SHURflo's inspection, any unit found faulty due to manufacturing defects will be repaired or replaced at no charge. This warranty does not apply to any damage resulting from misuse, negligence, accidents, improper installation or wiring. Abuses such as removal of the SHURflo label, improper repair, installation, application, or damaged lower housing assembly due to running dry, are also not considered warrantable. There will be charges applied for any of the above mentioned non-warrantable items.

If you send the pump to us for repair, please package it carefully to avoid shipping damage. Enclose your name, address, a phone number where you may be reached and a copy of your proof of purchase.

The above represents our warranty policy. Under no circumstances will we assume or accept responsibility for unauthorized expenditures, losses, or any costs greater than the basic pump value.



## SHURflo<sup>®</sup>

### 9325 SERIES

### 12/24 VDC POWERED

### SUBMERSIBLE PUMP

## OWNERS MANUAL



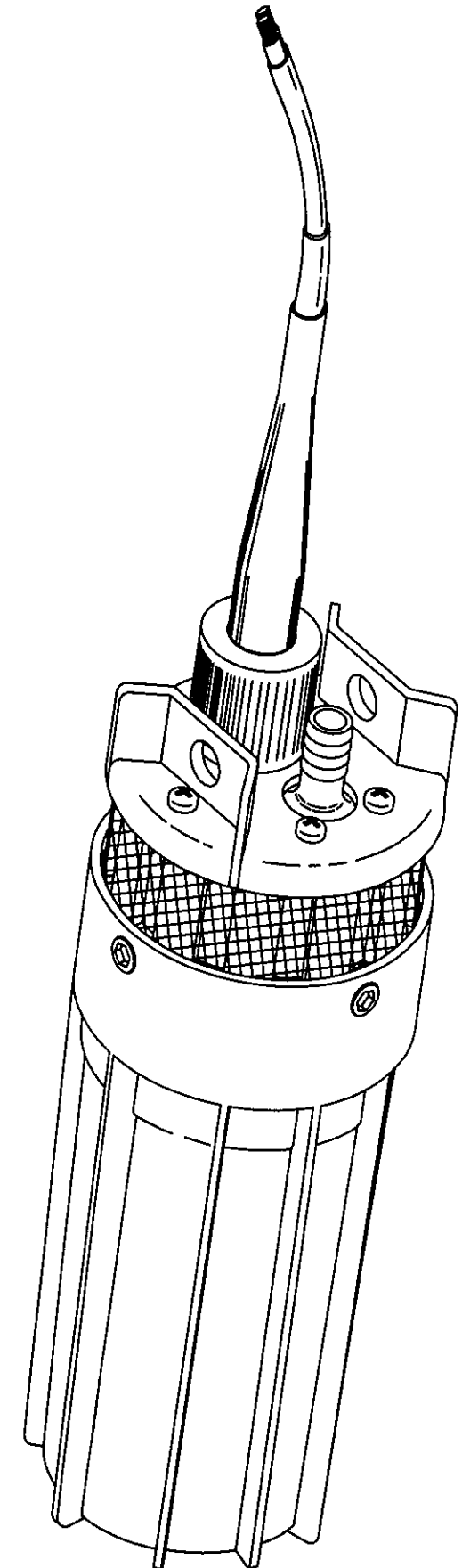
### WARNING



**DO NOT** use any SHURflo pump for petrol/gasoline, petroleum products, solvents, thinners or ANY other flammable liquid with flash point below 180°F [82°C].  
**NOT FOR USE** where flammable vapors are present.

#### Note:

**BEFORE CONNECTING OR OPERATING  
THIS PRODUCT, PLEASE READ THESE  
INSTRUCTIONS COMPLETELY.**



#### SHURFLO

3545 Harbor Gateway South, Ste. 103, Costa Mesa, CA 92626, (800) 854-3218 [www.shurflo.com](http://www.shurflo.com)

**SHURFLO Europe, Middle East, Africa**

**Pentair Water Belgium bvba**, Industriepark Wolfstee, Toekomstlaan 30, B-2200 Herentals, Belgium, +32-14-283500

All Pentair trademarks and logos are owned by Pentair, Inc. All other brand or product names are trademarks or registered marks of their respective owners. Because we are continuously improving our products and services, Pentair reserves the right to change specifications without prior notice. Pentair is an equal opportunity employer.

911-415 Rev L 06/12 ©Pentair, Inc. All rights Reserved.